



# CCIE ENTERPRISE



2023

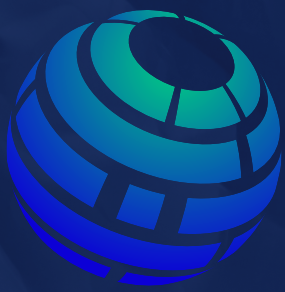




# CCIE ENTERPRISE INFRASTRUCTURE (V1.0) EXAM TOPICS - PRACTICAL EXAM

**Exam Description:** The Cisco CCIE Enterprise Infrastructure (v1.0) Practical Exam is an eight-hour, hands-on exam that requires a candidate to plan, design, deploy, operate, and optimize dual stack solutions (IPv4 and IPv6) for complex enterprise networks. Candidates are expected to program and automate the network within their exam, as per exam topics below. The following topics are general guidelines for the content likely to be included on the exam. Your knowledge, skills and abilities on these topics will be tested throughout the entire network lifecycle, unless explicitly specified otherwise within this document.

**The exam is closed book and no outside reference materials are allowed.**



# CCIE ENTERPRISE INFRASTRUCTURE (V1.0)

## EXAM TOPICS - PRACTICAL EXAM

### 1. Network Infrastructure (30%)

#### 1.1 Switched campus

##### 1.1.a Switch administration

1.1.a i Managing MAC address table

1.1.a ii Errdisable recovery

1.1.a iii L2 MTU

##### 1.1.b Layer 2 protocols

1.1.b i CDP, LLDP

1.1.b ii UDLD

##### 1.1.c VLAN technologies

1.1.c i Access ports

1.1.c ii Trunk ports (802.1Q)

1.1.c iii Native VLAN

1.1.c iv Manual VLAN pruning

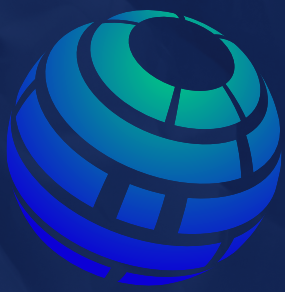
1.1.c v VLAN database

1.1.c vi Normal range and extended range VLANs

1.1.c vii Voice VLAN

1.1.c viii VTP





# CCIE ENTERPRISE INFRASTRUCTURE (V1.0)

## EXAM TOPICS - PRACTICAL EXAM

### 1.1.d EtherChannel

1.1.d i LACP, static

1.1.d ii Layer 2, Layer 3

1.1.d iii Load balancing

1.1.d iv EtherChannel Misconfiguration Guard



### 1.1.e Spanning Tree Protocol

1.1.e i PVST+, Rapid PVST+, MST

1.1.e ii Switch priority, port priority, path cost, STP timers

1.1.e iii PortFast, BPDU Guard, BPDU Filter

1.1.e iv Loop Guard, Root Guard

### 1.2 Routing Concepts

1.2.a Administrative distance

1.2.b VRF-lite

1.2.c Static routing

1.2.d Policy Based Routing

1.2.e VRF-aware routing with any routing protocol

1.2.f Route filtering with any routing protocol

1.2.g Manual summarization with any routing protocol





# CCIE ENTERPRISE INFRASTRUCTURE (V1.0)

## EXAM TOPICS - PRACTICAL EXAM

1.2.h Redistribution between any pair of routing protocols

1.2.i Routing protocol authentication

1.2.j Bidirectional Forwarding Detection

### 1.3 EIGRP

1.3.a Adjacencies

### 1.3.b Best path selection

1.3.b i RD, FD, FC, successor, feasible successor

1.3.b ii Classic Metrics and Wide Metrics

### 1.3.c Operations

1.3.c i General operations

1.3.c ii Topology table

1.3.c iii Packet types

1.3.c iv Stuck In Active

1.3.c v Graceful shutdown

### 1.3.d EIGRP load balancing

1.3.d i Equal-cost

1.3.d ii Unequal-cost

1.3.d iii Add-path





# CCIE ENTERPRISE INFRASTRUCTURE (V1.0)

## EXAM TOPICS - PRACTICAL EXAM

### 1.3.e EIGRP Named Mode

### 1.3.f Optimization, convergence and scalability

1.3.f i Fast convergence requirements

1.3.f ii Query propagation boundaries

1.3.f iii IP FRR (single hop)

1.3.f iv Leak-map with summary routes

1.3.f v EIGRP stub with leak map

### 1.4 OSPF (v2 and v3)

1.4.a Adjacencies

1.4.b Network types, area types

1.4.c Path preference

### 1.4.d Operations

1.4.d i General operations

1.4.d ii Graceful shutdown

1.4.d iii GTSM (Generic TTL Security Mechanism)

### 1.4.e Optimization, convergence and scalability

1.4.e i Metrics

1.4.e ii LSA throttling, SPF tuning, fast hello

1.4.e iii LSA propagation control (area types)





# CCIE ENTERPRISE INFRASTRUCTURE (V1.0)

## EXAM TOPICS - PRACTICAL EXAM

1.4.e iv Stub router 1.4.e v Loop-free alternate

1.4.e vi Prefix suppression

### 1.5 BGP

1.5.a IBGP and EBGP peer relationships

1.5.a i Peer-group/update-group, template

1.5.a ii Active, passive

1.5.a iii Timers

1.5.a iv Dynamic neighbors

1.5.a v 4-byte AS numbers

1.5.a vi Private AS

### 1.5.b Path selection

1.5.b i Attributes

1.5.b ii Best path selection algorithm

1.5.b iii Load balancing

### 1.5.c Routing policies

1.5.c i Attribute manipulation

1.5.c ii Conditional advertisement

1.5.c iii Outbound Route Filtering

1.5.c iv Standard and extended communities





# CCIE ENTERPRISE INFRASTRUCTURE (V1.0)

## EXAM TOPICS - PRACTICAL EXAM

1.5.c v Multi-homing

### 1.5.d AS path manipulations

1.5.d i local-AS, allowas-in, remove-private-as

1.5.d ii Prepend

1.5.d iii Regexp

### 1.5.e Convergence and scalability

1.5.e i Route reflector

1.5.e ii Aggregation, as-set

### 1.5.f Other BGP features

1.5.f i Multipath, add-path

1.5.f ii Soft reconfiguration, Route Refresh



## 1.6 Multicast

### 1.6.a Layer 2 multicast

1.6.a i IGMPv2, IGMPv3

1.6.a ii IGMP Snooping, PIM Snooping

1.6.a iii IGMP Querier

1.6.a iv IGMP Filter 1.6.a v MLD

1.6.b Reverse path forwarding check



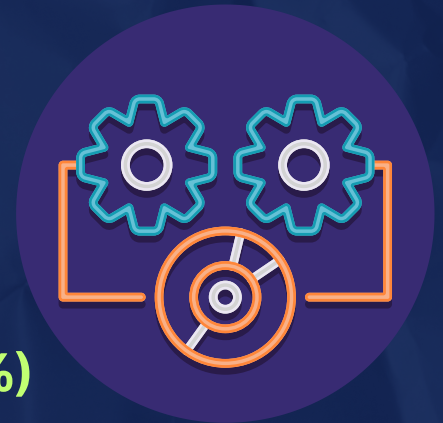


# CCIE ENTERPRISE INFRASTRUCTURE (V1.0)

## EXAM TOPICS - PRACTICAL EXAM

### 1.6.c PIM

- 1.6.c i Sparse Mode
- 1.6.c ii Static RP, BSR, AutoRP
- 1.6.c iii Group to RP Mapping
- 1.6.c iv Bidirectional PIM
- 1.6.c v Source-Specific Multicast
- 1.6.c vi Multicast boundary, RP announcement filter
- 1.6.c vii PIMv6 Anycast RP
- 1.6.c viii IPv4 Anycast RP using MSDP
- 1.6.c ix Multicast multipath

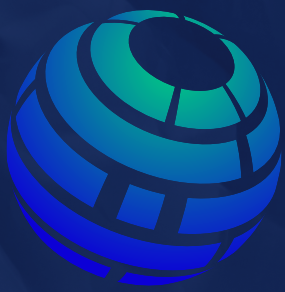


## 2. Software Defined Infrastructure (25%)

### 2.1 Cisco SD Access

#### 2.1.a Design a Cisco SD Access solution

- 2.1.a i Underlay network (IS-IS, manual/PnP)
- 2.1.a ii Overlay fabric design (LISP, VXLAN, Cisco TrustSec)
- 2.1.a iii Fabric domains (single-site and multi-site using SD-WAN transit)



# CCIE ENTERPRISE INFRASTRUCTURE (V1.0)

## EXAM TOPICS - PRACTICAL EXAM

### 2.1.b Cisco SD Access deployment

2.1.b i Cisco DNA Center device discovery and device management

2.1.b ii Add fabric node devices to an existing fabric

2.1.b iii Host onboarding (wired endpoints only)

2.1.b iv Fabric border handoff

### 2.1.c Segmentation

2.1.c i Macro-level segmentation using VNs

2.1.c ii Micro-level segmentation using SGTs (using Cisco ISE)

### 2.1.d Assurance

2.1.d i Network and client health (360)

2.1.d ii Monitoring and troubleshooting

### 2.2 Cisco SD-WAN

2.2.a Design a Cisco SD-WAN solution

2.2.a i Orchestration plane (vBond, NAT)

2.2.a ii Management plane (vManage)





# CCIE ENTERPRISE INFRASTRUCTURE (V1.0)

## EXAM TOPICS - PRACTICAL EXAM

2.2.a iii Control plane (vSmart, OMP)

2.2.a iv Data plane (vEdge/cEdge)

### 2.2.b WAN edge deployment

2.2.b i Onboarding new edge routers

2.2.b ii Orchestration with zero-touch provisioning/Plug-And-Play

2.2.b iii OMP 2.2.b iv TLOC

2.2.c Configuration templates

2.2.d Localized policies

2.2.e Centralized policies



## 3. Transport Technologies and Solutions (15%)

### 3.1 MPLS

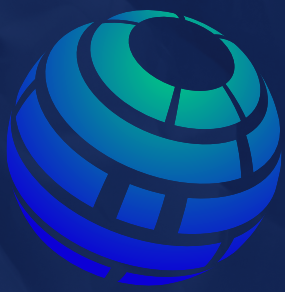
#### 3.1.a Operations

3.1.a i Label stack, LSR, LSP

3.1.a ii LDP

3.1.a iii MPLS ping, MPLS traceroute SD-WAN transit)



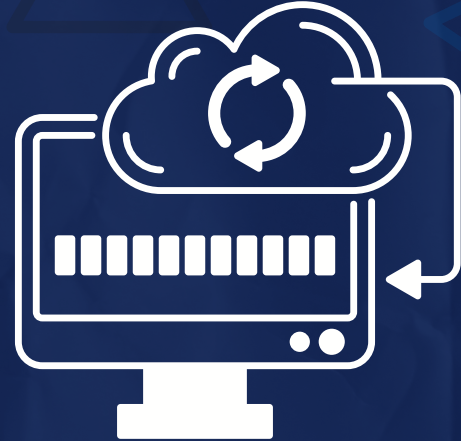


# CCIE ENTERPRISE INFRASTRUCTURE (V1.0)

## EXAM TOPICS - PRACTICAL EXAM

### 3.1.b L3VPN

- 3.1.b i PE-CE routing
- 3.1.b ii MP-BGP VPNv4/VPNv6
- 3.1.b iii Extranet (route leaking)



### 3.2 DMVPN

#### 3.2.a Troubleshoot DMVPN Phase 3 with dual-hub

- 3.2.a i NHRP
- 3.2.a ii IPsec/IKEv2 using pre-shared key
- 3.2.a iii Per-Tunnel QoS

#### 3.2.b Identify use cases for FlexVPN

- 3.2.b i Site-to-site, Server, Client, Spoke-to-Spoke
- 3.2.b ii IPsec/IKEv2 using pre-shared key
- 3.2.b iii MPLS over FlexVPN

## 4. Infrastructure Security and Services (15%)

### 4.1 Device Security on Cisco IOS XE

- 4.1.a Control plane policing and protection
- 4.1.b AAA



# CCIE ENTERPRISE INFRASTRUCTURE (V1.0)

## EXAM TOPICS - PRACTICAL EXAM

### 4.2 Network Security

#### 4.2.a Switch security features

4.2.a i VACL, PACL

4.2.a ii Storm control

4.2.a iii DHCP Snooping, DHCP option 82

4.2.a iv IP Source Guard

4.2.a v Dynamic ARP Inspection

4.2.a vi Port Security

4.2.a vii Private VLAN



#### 4.2.b Router security features

4.2.b i IPv6 Traffic Filters

4.2.b ii IPv4 Access Control Lists

4.2.b iii Unicast Reverse Path Forwarding

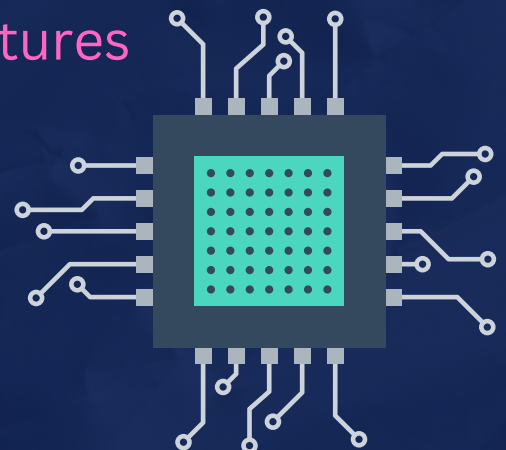
#### 4.2.c IPv6 infrastructure security features

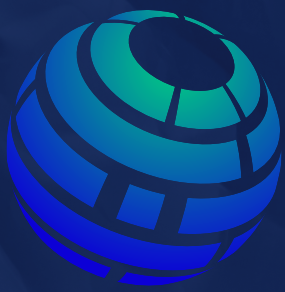
4.2.c i RA Guard

4.2.c ii DHCP Guard

4.2.c iii Binding table

4.2.c iv Device tracking





# CCIE ENTERPRISE INFRASTRUCTURE (V1.0)

## EXAM TOPICS - PRACTICAL EXAM

4.2.c v ND Inspection/Snooping

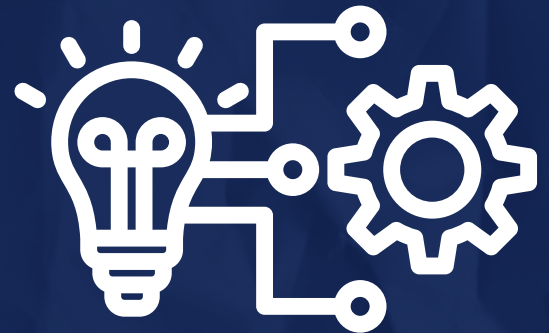
4.2.c vi Source Guard

### 4.2.d IEEE 802.1X Port-Based Authentication

4.2.d i Device roles, port states

4.2.d ii Authentication process

4.2.d iii Host modes



### 4.3 System Management

4.3.a Device management

4.3.a i Console and VTY

4.3.a ii SSH, SCP 4.3.a iii RESTCONF, NETCONF

### 4.3.b SNMP

4.3.b i v2c

4.3.b ii v3



### 4.3.c Logging

4.3.c i Local logging, syslog, debugs, conditional debugs

4.3.c ii Timestamps

### 4.4 Quality of Service

4.4.a End to end L3 QoS using MQC



# CCIE ENTERPRISE INFRASTRUCTURE (V1.0)

## EXAM TOPICS - PRACTICAL EXAM

4.4.a i DiffServ 4.4.a ii CoS and DSCP Mapping

4.4.a iii Classification

4.4.a iv Network Based Application Recognition (NBAR)

4.4.a v Marking using IP Precedence, DSCP, CoS

4.4.a vi Policing, shaping

4.4.a vii Congestion management and avoidance

4.4.a viii HQoS, Sub-rate Ethernet Link

### 4.5 Network Services

4.5.a First Hop Redundancy Protocols

4.5.a i HSRP, GLBP, VRRP

4.5.a ii Redundancy using IPv6 RS/RA

### 4.5.b Network Time Protocol

4.5.b i Master, client

4.5.b ii Authentication

### 4.5.c DHCP on Cisco IOS

4.5.c i Client, server, relay

4.5.c ii Options 4.5.c iii SLAAC/DHCPv6 interaction

4.5.c iv Stateful, stateless DHCPv6





# CCIE ENTERPRISE INFRASTRUCTURE (V1.0)

## EXAM TOPICS - PRACTICAL EXAM

4.5.c v DHCPv6 Prefix Delegation

### 4.5.d IPv4 Network Address Translation

4.5.d i Static NAT, PAT

4.5.d ii Dynamic NAT, PAT

4.5.d iii Policy-based NAT, PAT

4.5.d iv VRF-aware NAT, PAT

4.5.d v IOS-XE VRF-Aware Software Infrastructure (VASI)

NAT



### 4.6 Network optimization

4.6.a IP SLA

4.6.a i ICMP probes

4.6.a ii UDP probes

4.6.a iii TCP probes

4.6.b Tracking object

4.6.c Flexible NetFlow



### 4.7 Network operations

4.7.a Traffic capture





# CCIE ENTERPRISE INFRASTRUCTURE (V1.0)

## EXAM TOPICS - PRACTICAL EXAM

4.7.a i SPAN

4.7.a ii RSPAN

4.7.a iii ERSPAN

4.7.a iv Embedded Packet Capture

4.7.b Cisco IOS-XE troubleshooting tools

4.7.b i Packet Trace

4.7.b ii Conditional debugger (debug platform condition)

### 5. Infrastructure Automation and Programmability (15%)

5.1 Data encoding formats

5.1.a JSON

5.1.b XML

5.2 Automation and scripting

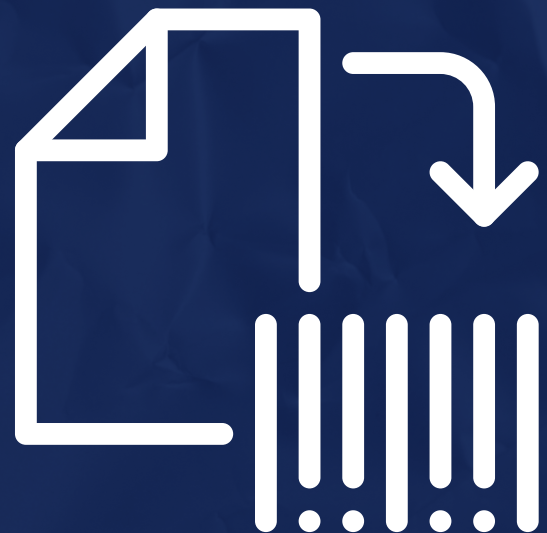
5.2.a EEM applets

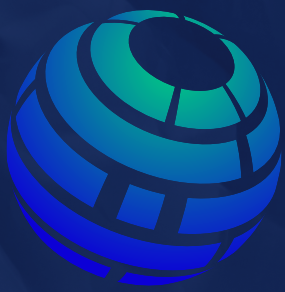
5.2.b Guest shell

5.2.b i Linux environment

5.2.b ii CLI Python module

5.2.b iii EEM Python module





# CCIE ENTERPRISE INFRASTRUCTURE (V1.0)

## EXAM TOPICS - PRACTICAL EXAM

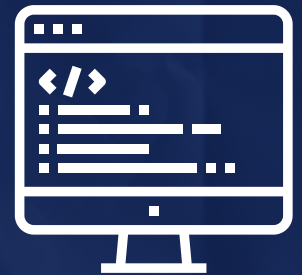
### 5.3 Programmability

#### 5.3.a Interaction with vManage API

5.3.a i Python requests library and Postman

5.3.a ii Monitoring endpoints

5.3.a iii Configuration endpoints



#### 5.3.b Interaction with Cisco DNA Center API

5.3.b i HTTP request (GET, PUT, POST) via Python requests library and Postman

#### 5.3.c Interaction with Cisco IOS XE API

5.3.c i Via NETCONF/YANG using Python ncclient library

5.3.c ii Via RESTCONF/YANG using Python requests library and Postman

#### 5.3.d Deploy and verify model-driven telemetry

5.3.d i Configure on-change subscription using gRPC



C C I E

# CONTACT US



**LAN & WAN**  
TECHNOLOGY



9650272078,9650275317



info@lanandwantechonology.com



www.lannwantechonology.com



Eros sampoornam sec 2 greater  
Noida west Gautam Buddha Nagar

LET'S MAKE SOMETHING  
BEAUTIFUL TOGETHER

2 0 2 3



C C I E

# CONTACT US



**LAN & WAN**  
TECHNOLOGY



9650272078,9650275317



info@lanandwantechonology.com



www.lannwantechonology.com



Eros sampoornam sec 2 greater  
Noida west Gautam Buddha Nagar

LET'S MAKE SOMETHING  
BEAUTIFUL TOGETHER

2 0 2 3